



Predictable stability when
you need it

Neoss ProActive[®] Edge



Intelligent Simplicity

Designed to *save money and time*

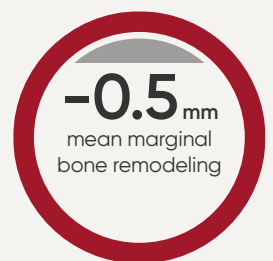
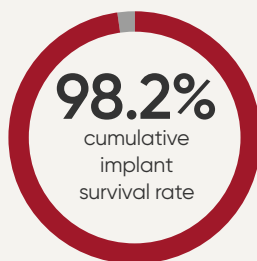
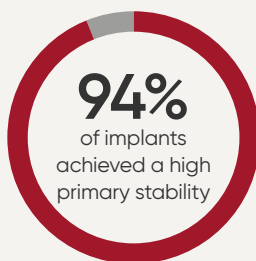
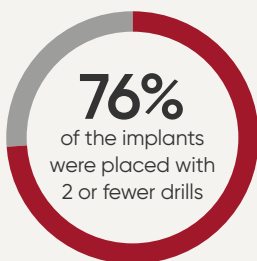
The simplified drilling protocol will save you time and money due to reduced drilling steps. Thanks to the implant design, you can achieve high primary stability in a variety of bone densities with predictable outcomes.

- ✓ 1–2 drill protocol
- ✓ Reduce steps, saves time
- ✓ High primary stability
- ✓ Predictable results



Experience and science matters

Based on real-life user feedback from more than 25 clinicians from all around the globe, Neoss ProActive® Edge shows great results.



Clinical
case

Scan QR code
to see full case series.

Better or equal to industry leading implants

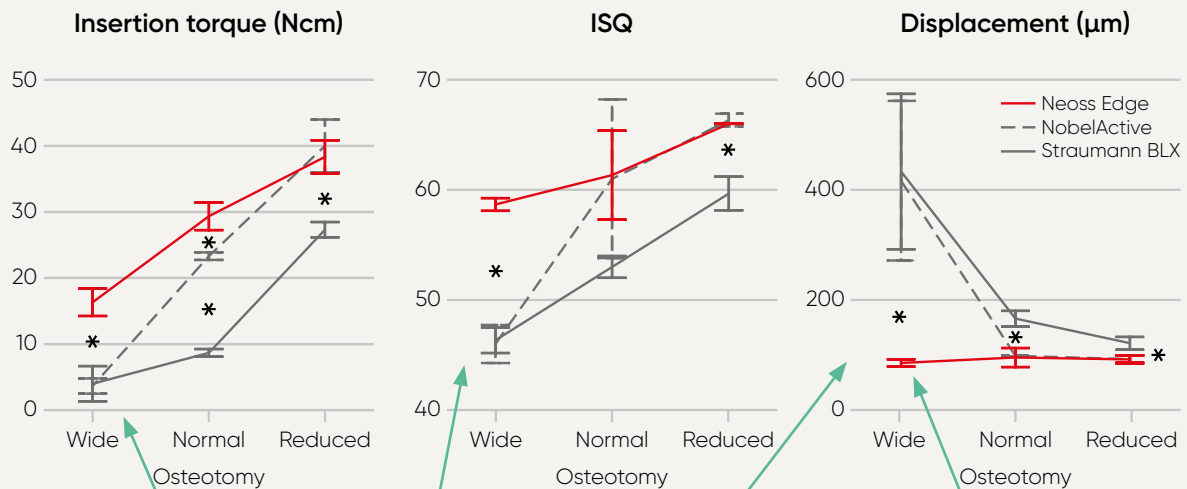
In an independent study of aggressive design implants the Neoss ProActive® Edge performs equal or better than the market leader implants. Achieving higher primary stability especially in over-prepared sights.



Study

The stars says it all!

Neoss ProActive Edge shows significant higher stability than Straumann® BLX* with all methods in all preparations.



Neoss ProActive Edge has a significant higher stability than both Straumann® BLX and NobelActive® in over-prepared sites.

This difference is probably related to implant neck design.

Turra M, Petersson A, and Sennerby L. Clin Oral Implants Res. 2020;31(S20):60.



Dr. med. dent. Wim van Thoor
Dentist
Heinsberg, Germany

Clinical case

Clinical case showing extraction and immediate placement of a Neoss ProActive Edge implant with simultaneous bone grafting using THE Graft™ (Purgo). A fully digital workflow was used for fabrication of the final prosthetic restoration.



Clinical case

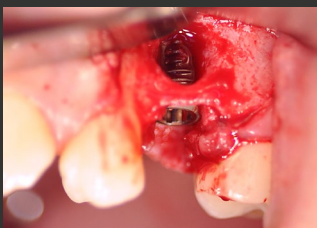


Figure 1. A Ø 5.0 × 13 mm Neoss ProActive Edge implant was installed in position 24. Good primary stability was reached despite the limited bone situation. THE Graft (Purgo) cancellous bone granules were used to correct the buccal fenestration.

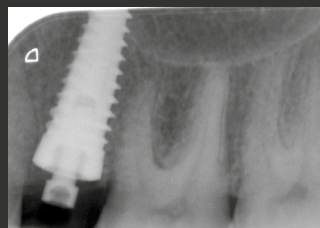


Figure 2. Radiograph showing the Edge implant at time of insertion.



Figure 3. A ScanPeg was attached to the Esthetic Healing Abutment, and the site was digitally scanned using an intraoral scanner.



Figure 4. Final restoration at time of delivery. An individualized zirconia abutment was fabricated on a Neoss TiBase and a zirconia crown was fitted on the abutment.

Why Neoss ProActive[®] Edge

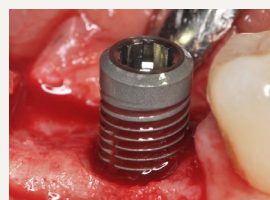
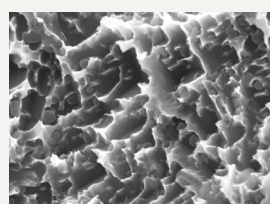
By using the Neoss ProActive Edge you will save both time and money. Thanks to the NeossONE single platform you can have much less inventory in the practice. At the same time you will have a predictable and reliable implant with minimum bone loss and over 10 year clinical data.

Neoss ProActive[®] surface

Over 10 years of clinical data
and 98.6% survival rate

ProActive is a modern super-hydrophilic and ultra-clean implant surface that was introduced already in 2009. It has a proven clinical success and is backed up by long-term data¹.

- ✓ Ultra-clean, super-hydrophilic and magnesium-ion enriched
 - Accelerated and increased strength of osseointegration²
 - Maintained implant stability during healing³
- ✓ Defined dual surface (blasted and etched) with lower roughness at implant collar
 - Stable bone levels over time – Bone maintenance⁴
 - 10-year clinical data on > 1200 patients showing > 98% cumulative survival rate^{4,5,6}



Machined surface in proximity of connection

"Low roughness"
Sa 0.4 µm

Sa 1.0 µm

*Super-hydrophilic
& Ultra-clean*

1 Engman F et al. Letters Impl Dent. 2022;2:6–11.
2 Sennerby L et al. Letters Impl Dent. 2017;1:7–10.
3 Vanden Bogaerde L et al. Int J Dent. 2016;84:24931.
4 Sahlin H et al. Letters Impl Dent. 2022;2:18–24.
5 Sennerby L et al. Letters Impl Dent. 2022;2:29–32.
6 Hassfurth N et al. Clin Oral Implants Res. 2021;32(S22):156–157.



NeossONE™

Saves time with one prosthetic platform

NeossONE is a solution unique to the Neoss implant system – one prosthetic platform, across three implant designs. Simply put, the same prosthetic components fit every implant. The benefits are clear: reducing patient treatment time, optimizing inventory control and patient outcomes.

- ✓ Reduce steps, saves time
- ✓ Less inventory and maximum flexibility
- ✓ Cost-effective solution for all
- ✓ One prosthetic platform for over 70 implants

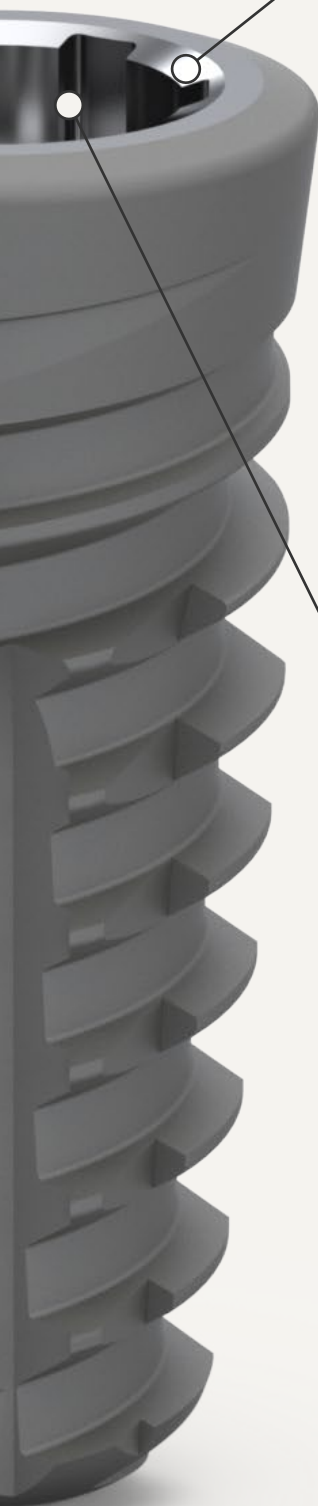


NeoLoc®

A strong *and tight connection*

With over 20 years of proven long-term clinical success, the NeoLoc implant to abutment connection is a remarkably strong and tight connection.

- ✓ Strong and tight connection
- ✓ Proven long-term clinical success
- ✓ High levels of bone preservation



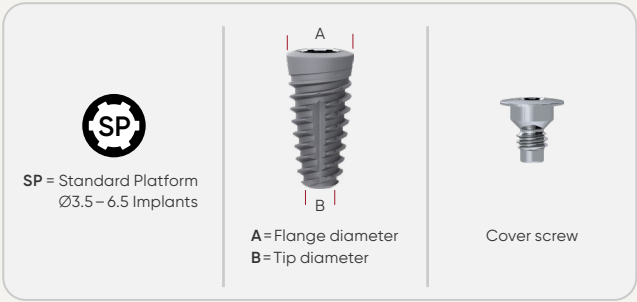
The *option is yours*

We have given you the choice to pick the implant package that you want for the healing options you prefer.

Neoss ProActive Edge with cover crew is ideal for immediate loading cases.

Neoss Implant

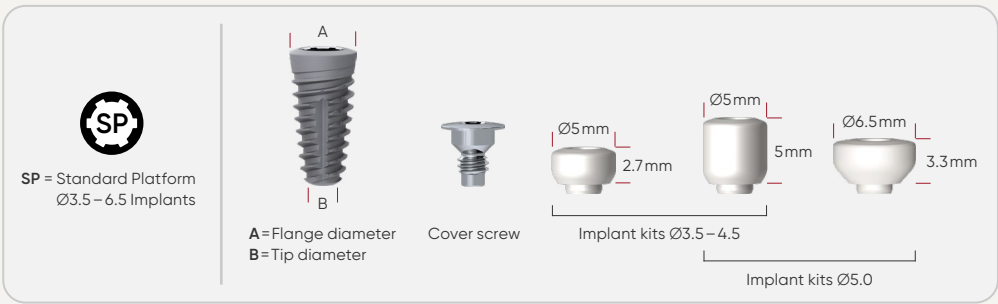
The Implant includes Implant and Cover Screw.



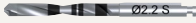






















Neoss ProActive Edge kit is great when you want to have your options open.


Neoss Implant Kit

The Implant Kit includes Implant, Cover Screw, Healing Abutments in PEEK in two different sizes and Healing Abutment Screw.



Site preparation

		ProActive Edge Ø3.5 mm	ProActive Edge Ø4.0 mm	ProActive Edge Ø4.5 mm	ProActive Edge Ø5.0 mm
	Ø2.2 S				
	Ø3.0 T				
	Ø3.4 T				
	Ø3.9 T				
	Ø4.4 T				
	Countersink				
Bone quality	 Soft IV & III	 Regular II	 Dense I		

Note: If a marking is dashed , it is non-mandatory, unless it is the last preparation step. Please see the instructions for use for all procedure aspects.

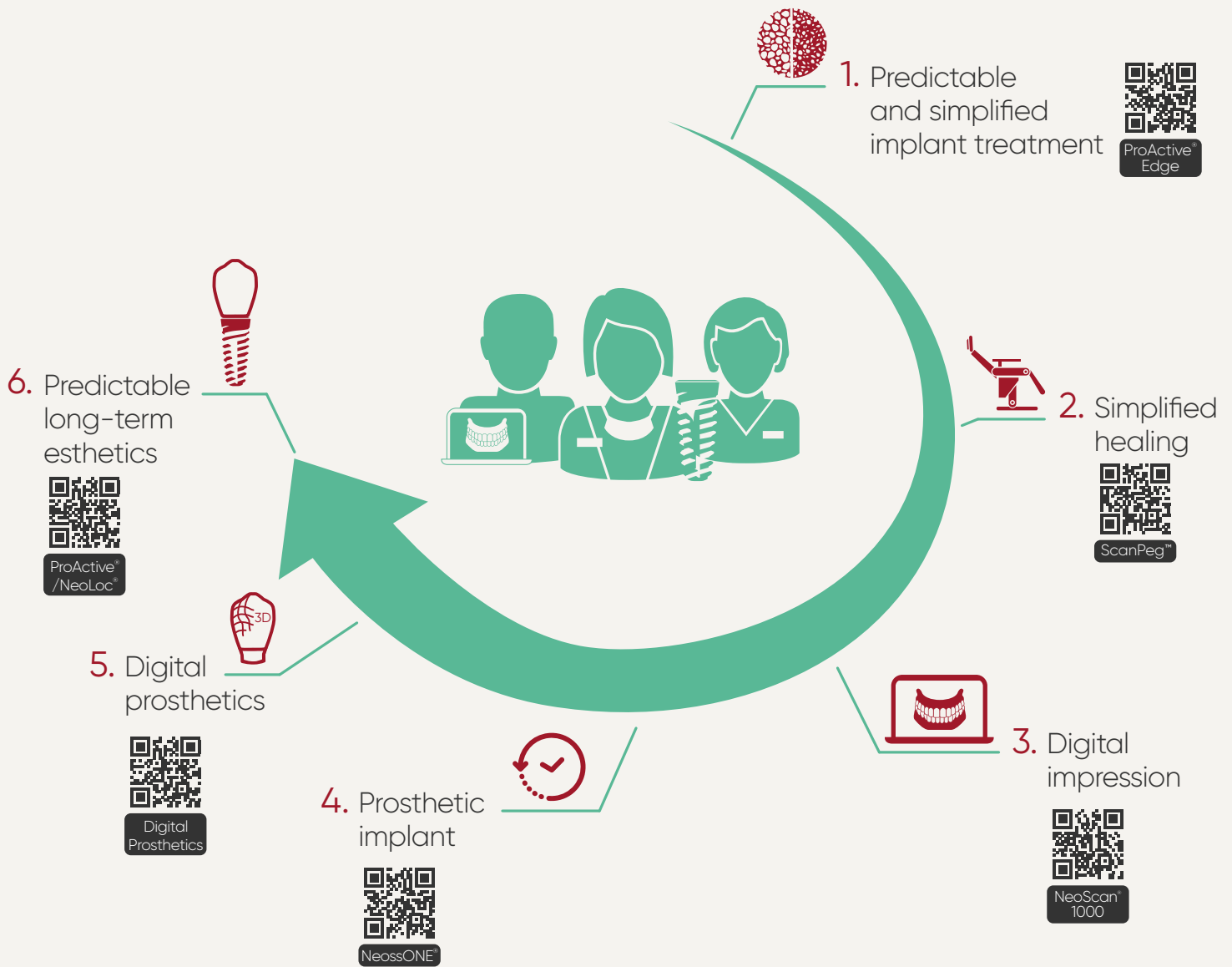
The use of the countersink is recommended.

Example, Ø4.5 ProActive Edge Implant

Soft bone (IV & III) O	Regular bone (II) O	Dense bone (I) ●
Ø2.2 S	Ø2.2 S	Ø2.2 S
Ø3.0 T	Ø3.4 T	Ø3.9 T

Digital Simplicity for you and your patients

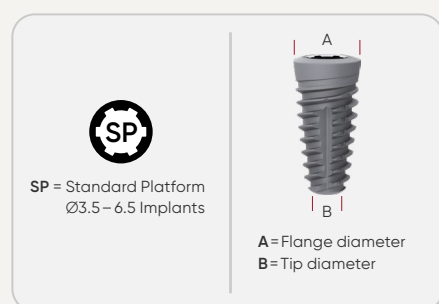
Utilizing a simple digital workflow in your daily practice will save you time, increase predictability, and help you deliver the best functional and esthetic outcomes for your patients.



Assortment

Art. No.	Description	Art. No.	Description	A	B
21417	Implant – Neoss ProActive Edge Ø3.5×9 mm	21301	Implant Kit – Neoss ProActive Edge Ø3.5×9 mm	4.0 mm	1.6 mm
21418	Implant – Neoss ProActive Edge Ø3.5×11 mm	21302	Implant Kit – Neoss ProActive Edge Ø3.5×11 mm		
21419	Implant – Neoss ProActive Edge Ø3.5×13 mm	21303	Implant Kit – Neoss ProActive Edge Ø3.5×13 mm		
21420	Implant – Neoss ProActive Edge Ø3.5×15 mm	21304	Implant Kit – Neoss ProActive Edge Ø3.5×15 mm		
21423	Implant – Neoss ProActive Edge Ø4.0×9 mm	21305	Implant Kit – Neoss ProActive Edge Ø4.0×9 mm	4.3 mm	1.9 mm
21424	Implant – Neoss ProActive Edge Ø4.0×11 mm	21306	Implant Kit – Neoss ProActive Edge Ø4.0×11 mm		
21425	Implant – Neoss ProActive Edge Ø4.0×13 mm	21307	Implant Kit – Neoss ProActive Edge Ø4.0×13 mm		
21426	Implant – Neoss ProActive Edge Ø4.0×15 mm	21308	Implant Kit – Neoss ProActive Edge Ø4.0×15 mm		
21429	Implant – Neoss ProActive Edge Ø4.5×9 mm	21309	Implant Kit – Neoss ProActive Edge Ø4.5×9 mm	4.9 mm	2.2 mm
21430	Implant – Neoss ProActive Edge Ø4.5×11 mm	21310	Implant Kit – Neoss ProActive Edge Ø4.5×11 mm		
21431	Implant – Neoss ProActive Edge Ø4.5×13 mm	21311	Implant Kit – Neoss ProActive Edge Ø4.5×13 mm		
21432	Implant – Neoss ProActive Edge Ø4.5×15 mm	21312	Implant Kit – Neoss ProActive Edge Ø4.5×15 mm		
21435	Implant – Neoss ProActive Edge Ø5.0×9 mm	21313	Implant Kit – Neoss ProActive Edge Ø5.0×9 mm	5.4 mm	2.4 mm
21436	Implant – Neoss ProActive Edge Ø5.0×11 mm	21314	Implant Kit – Neoss ProActive Edge Ø5.0×11 mm		
21437	Implant – Neoss ProActive Edge Ø5.0×13 mm	21315	Implant Kit – Neoss ProActive Edge Ø5.0×13 mm		
21438	Implant – Neoss ProActive Edge Ø5.0×15 mm	21316	Implant Kit – Neoss ProActive Edge Ø5.0×15 mm		

All Healing Abutments known from "kit" assortment available separately.
See sheet with full assortment and art nos.



AUSTRALIA & NEW ZEALAND OFFICE

Neoss Australia Pty. Ltd

G04 Ground Floor North Tower, John Oxley Centre,

339 Coronation Drive, Milton Qld 4064, Australia

T: +61 7 3216 0165

E: info.au@neoss.com

Contact your local representative for product availability details. All products are not available in every market.

15482_0 AU 23-02 © Neoss Group, 2023. Copyrights, design rights and trademarks, Neoss documents, software and designs may not be reprinted, copied or published in whole or part, without the written authorization of Neoss Group. Neoss and the N logo are registered trademarks of Neoss Group. NeoLoc™, NeossONE™, and ProActive™ are trademarks of Neoss Group. Straumann® BLX is a registered trademark of Straumann Holding AG and NobelActive® is a registered trademark by Nobel Biocare.