



Off-the-shelf revolutionary  
*2-in-1 solution*

Esthetic Healing Abutments with ScanPeg™

Intelligent Simplicity

# A smarter, *patient-friendly* *and more efficient* workflow

The Esthetic Healing Abutments with ScanPeg is a combination of healing abutment and scan abutment in a revolutionary 2-in-1 solution. This is a simplified, patient-friendly and effortless procedure for accurate intraoral scanning, preserving the soft tissue and keeping the biological seal when not removing the healing abutment when scanning.

- ✓ Less steps, fewer visits
- ✓ Single and multi implant restorations
- ✓ Undisturbed healing: Excellent esthetics
- ✓ Digital emergence profile

## Providing treatment with *fewer steps*

### Easier handling provides a faster improved procedure

- Less chair time, fewer treatment steps
- Minimized component exchange
- Streamlined intraoral scanning

### Providing excellent esthetics

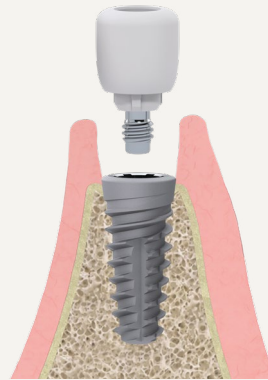
- Undisturbed healing
- Perfectly matched with Neoss individual and standard abutments
- Biological seal is maintained, tissue level is preserved



*Less steps, fewer visits* and tissue friendly

## 01 Healing abutment placement

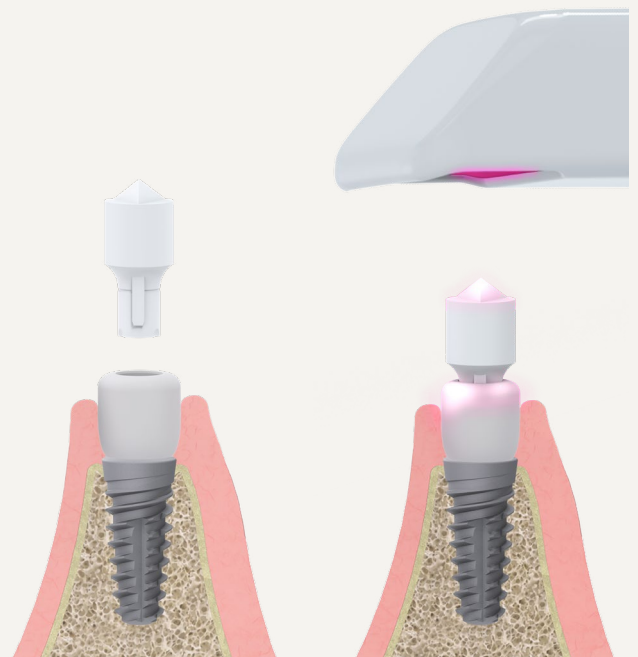
The Esthetic Healing Abutment is placed during first or second stage surgery and left until the final abutment is placed.



## 02 ScanPeg placement and scanning

Leaving the Esthetic Healing Abutment in place, an intraoral scan is carried out at abutment level utilizing the ScanPeg. The ScanPeg comes co-packed with the Esthetic Healing Abutment and is easy to both attach and remove.

The intraoral digital impression can be taken whenever you choose. ScanPeg shape is included in Neoss CAD libraries.

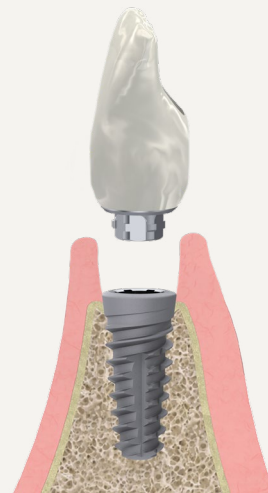


## 03 Placement of the final restoration

The flexibility you have with the ScanPeg when you take the digital impression allows design work to continue during the healing phase. The Esthetic Healing Abutment is not removed until the final restoration is placed, eliminating one complete surgical intervention.

All contours of Esthetic Healing Abutments are included in Neoss CAD libraries to design the emergence profile from patients contour to final restoration.

**exocad 3shape** 



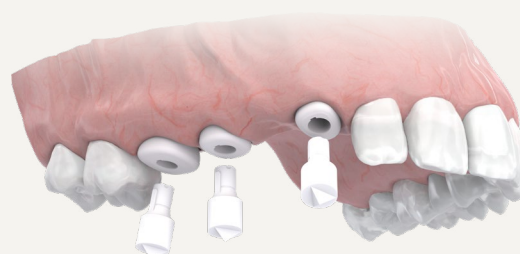
# Scan Abutment for *single and multiple restorations*

The Esthetic Healing Abutment with ScanPeg allows for a single and multi implant restoration.

Follow up of multi-implant cases treated and scanned with the Esthetic Healing Abutments with ScanPeg show excellent results in terms of passive fit of the restoration. Radiological stability of the peri-implant bone level fits in all protocols proven over a long period of time.

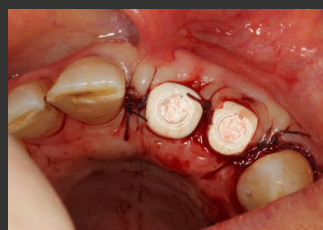
## 01 Placement of ScanPeg

The ScanPeg comes co-packed with the Esthetic Healing Abutment and is easy to both attach and remove.

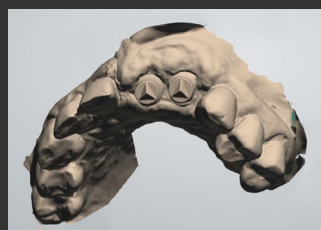


## Clinical case

Restoring a multiple implant case utilizing the Esthetic Healing Abutment with ScanPeg. Passive fit of the final restoration is achieved.



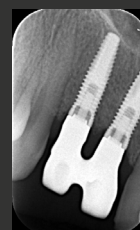
**Figure 1.** Two 4.0 × 13 mm Neoss ProActive® Tapered implants were placed in position 11 and 12. Two Esthetic Healing Abutment – Incisor (wide and narrow) were placed before positioning bone substitute to augment the buccal volume.



**Figure 2.** At time of suture removal, the ScanPegs were seated inside the Esthetic Healing Abutments, and an intraoral scan was taken without the need to remove the abutments. The advantages are that soft tissue is left to heal undisturbed and dislocation of graft material is avoided.



**Figure 3.** Final restoration (a customized CoCr structure from ARC solutions, layered with ceramic) at time of delivery, showing healthy peri-implant tissue.



**Figure 4.** Radiographic image showing stable bone levels.



**Dr. Jakob Zwaan**  
Dentist  
Calusco D'Adda, Italy



Scan QR code  
to see full case series.

Clinical  
case

## 02 Digital Impression with NeoScan™ 1000

The intraoral digital impression can be taken whenever you choose. ScanPeg shape is included in Neoss CAD libraries.



## 03 Placement of final bridge





All contours of Esthetic Healing Abutments are included in Neoss CAD libraries to design the emergence profile from patients contour to final restoration.

**exocad 3shape** 



## Your solution for *digital impressions*

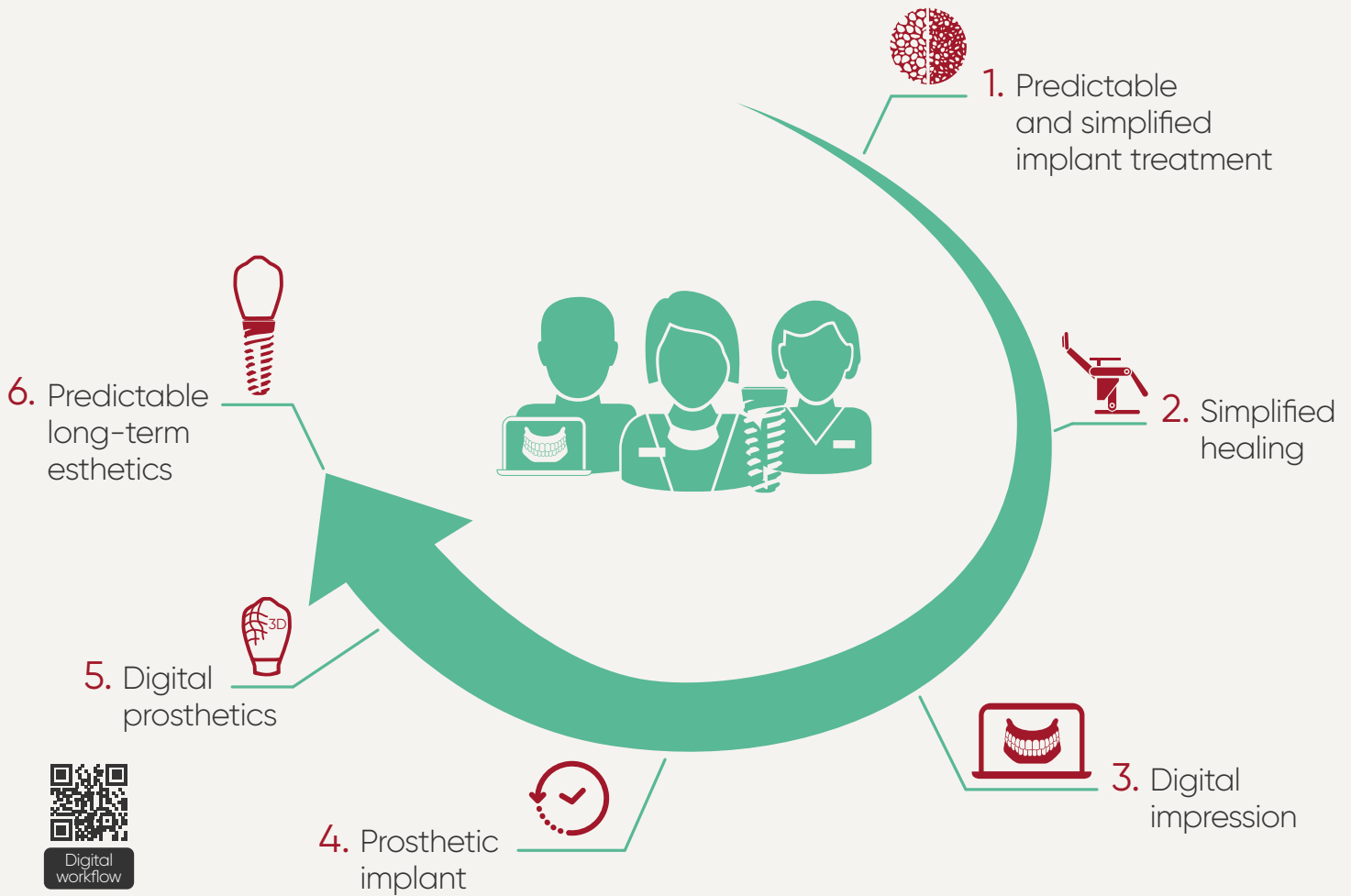
The NeoScan 1000 is a fast, accurate and easy-to-use intraoral scanner that provides the possibility for a flexible workflow. It fits very well with the Neoss Esthetic Healing Abutments with ScanPeg and is what your practice needs.

-  Easy to use
-  Fast and accurate scanning
-  Open system – implants, prosthetics and orthodontics
-  Attractive price and no license fees



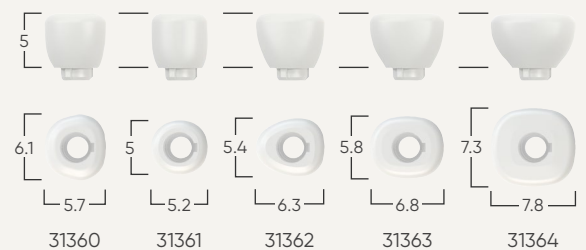
NeoScan  
1000

# Digital Simplicity for you and your patients



## Assortment

Art. No.	Description
31360	Esthetic Healing Abutment with ScanPeg – Wide Incisor
31361	Esthetic Healing Abutment with ScanPeg – Narrow Incisor
31362	Esthetic Healing Abutment with ScanPeg – Canine
31363	Esthetic Healing Abutment with ScanPeg – Premolar
31364	Esthetic Healing Abutment with ScanPeg – Molar
31365	ScanPeg – 5 pcs



### UNITED KINGDOM & IRELAND OFFICE

#### Neoss UK & Ireland Ltd

Windsor House, Cornwall Road, Harrogate, HG1 2PW

T: +44 1423 817 733

E: [info@neoss.com](mailto:info@neoss.com)

Contact your local representative for product availability details. All products are not available in every market.

11885\_2 EN 23-02 © Neoss Group, 2023. Copyrights, design rights and trademarks, Neoss documents, software and designs may not be reprinted, copied or published in whole or part, without the written authorization of Neoss Group. Neoss and the N logo are registered trademarks of Neoss Group. NeoScan™, NeoPro™, and NeoConnect™ are trademarks of Neoss Group. exocad® is a registered trademark of exocad GmbH and 3Shape® is a registered trademark of 3Shape A/S.