

Esthetic Healing Abutments with ScanPeg

- improve the workflow

Esthetic Healing Abutments are made in a range of anatomical shapes and enable simple creation of natural emergence profiles. The co-packed ScanPeg mounted in the Esthetic Healing Abutment provides simplified and accurate single tooth intra-oral scanning. The soft tissue remains undisturbed until placement of the final restoration with a matching anatomical margin incorporated in the individual or stock abutment.

Features & benefits

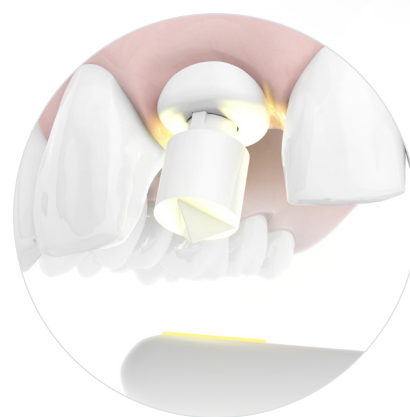
Undisturbed healing and patient friendly – With the no-component-exchange approach the biological seal is maintained and the tissue level is preserved. It makes the treatment less invasive and increases patient comfort.

Easier handling and improved procedure – The push-in ScanPeg is used with the healing abutment and replaces the need for a separate scan body for intra-oral scanning. This minimizes the exchange of components, streamlines the scanning process and reduces the number of treatment steps and the overall chair time.

Excellent esthetics – A natural soft tissue profile is created during the healing phase. Utilizing the healing abutment while scanning eliminates soft tissue collapse during impression taking. Esthetic Healing Abutments are part of the Esthetiline range and are perfectly matched with Esthetiline stock abutments and Neoss CAD/CAM abutments.

Variety of restorative options – Matching CAD/CAM abutments are available with straight or angulated screw channels in Ti, CoCr and ZrO₂. In addition, the ScanPeg is compatible with the Sirona Dentsply ScanPost and Scan Body using the CEREC Omnicam scanner and the inLab designs SW 4.x software for designing the superstructure on the Neoss TiBase abutments.

Scanner compatibility & return on investment – The ScanPeg is compatible with major intra-oral scanners on the market and your investment into digital processing starts to pay back. The ScanPeg makes intra-oral scanning easy, fast and accurate to use.



CAD/CAM abutments

Final Restoration

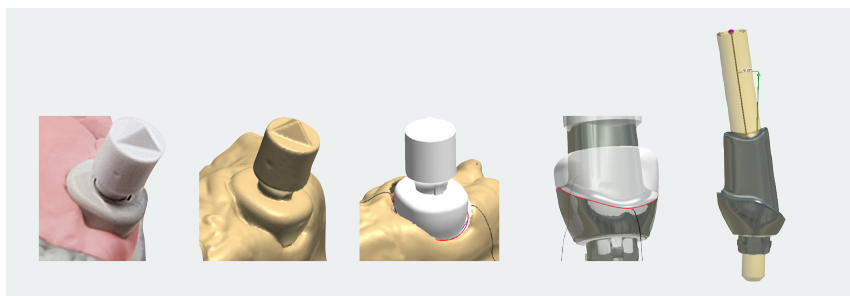
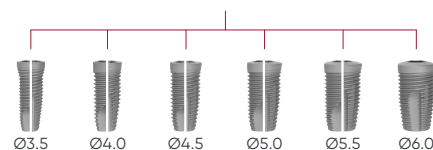


Digital Impression



Soft Tissue Healing

Esthetic Healing Abutments



Scan and design of final abutment with matching anatomical profile and angulated screw channel.

* Contact your local representative for availability on your market.

Indication

The Esthetic Healing Abutment functions as a regular healing abutment with the purpose to create a soft tissue profile during healing. In addition these Esthetic Healing abutments are also equipped with features making it possible to attach a ScanPeg for digital impression taking.

The ScanPeg is a scan body momentarily fitted in the screw access hole of the Neoss Esthetic Healing Abutment. The combination of these two components is used to take a digital impression without removing the healing abutment from the implant. This determines the position and angulation of an implant in relation to the adjacent teeth and soft tissue. The intended use is for single unit restorations only.

Facts & figures

Packaging – Esthetic Healing Abutments with a pre-assembled screw and the ScanPeg are supplied sterile in a blister.

The ScanPeg is also available as spare part in a 5-pack and is supplied non-sterile.

The ScanPeg can only be disinfected using a water-based disinfectant.

All parts are for single use.

Material – Abutments are made in PEEK.

Indexing – It is recommended that the implant is indexed prior to placing the Esthetic Healing Abutment to ensure an optimal anatomical profile.

ScanPeg seating – The push-in design enables a distinct seating and keeps the ScanPeg securely positioned. In addition, there is indicator (a horizontal groove) for confirmation of correct seating depth.

Compatible scanners – Intra-oral scanners listed in the table are compatible and validated for use with the ScanPeg.

Accuracy – Comparable with other commonly used intra-oral scan bodies in the market.

Library versions that include ScanPeg and Esthetiline shapes:

3shape: Neoss Brand Library 0.8 or higher

Exocad: Neoss Brand Library 0.5 or higher

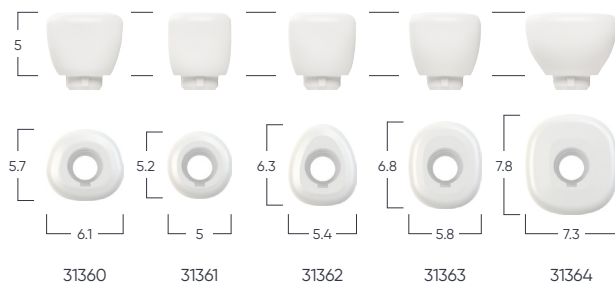
DWOS: Neoss Brand Library 0.4 or higher

Library download – The libraries are available for download, together with the installation and ordering guidelines and order forms, on www.neoss-cadcam.de

For indexing, proper seating and other aspects please see the instructions for use for all procedure aspects.



Scanner (manufacturer)	Compatibility
Trios (3Shape)	✓
CEREC Omnicam (Sirona Dentsply)	✓
CS 3500/3600 (Carestream)	✓
Dental Wings	✓
iTero (Align Technology)	In progress
True Definition Scanner (3M)	In progress



Assortment

Art. No. Description

31360	Esthetic Healing Abutment with ScanPeg – Wide Incisor
31361	Esthetic Healing Abutment with ScanPeg – Narrow Incisor
31362	Esthetic Healing Abutment with ScanPeg – Canine
31363	Esthetic Healing Abutment with ScanPeg – Pre-molar
31364	Esthetic Healing Abutment with ScanPeg – Molar

31365 ScanPeg – 5 pcs (spare part)

All products might not be available in all markets.