



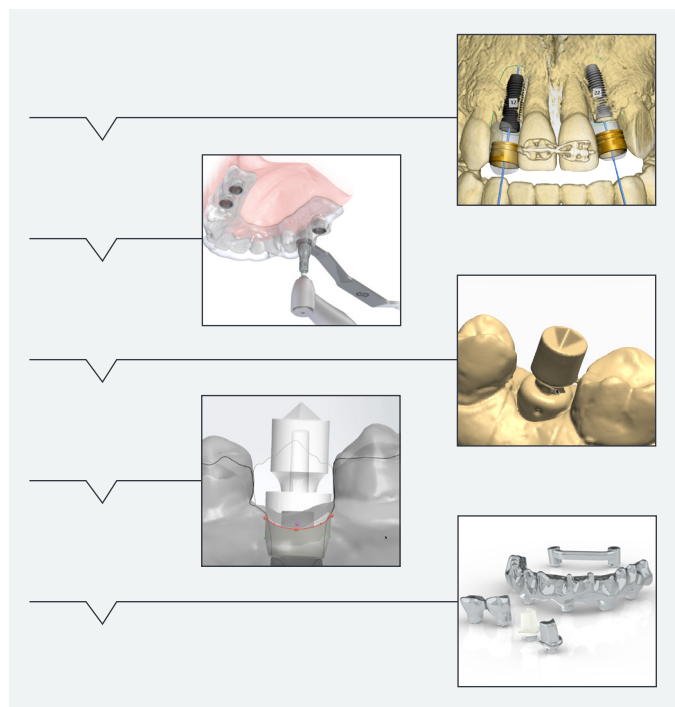
## neoss® | Individual Prosthetics

Central milling on Neoss

## Neoss digital solutions

Continuous developments in hardware, software, manufacturing processes and materials are creating new opportunities for clinical and laboratory workflows. Neoss has taken an open platform approach and integrated the Neoss system into your daily planning, surgical and design software. The aim is to support your adaptation to new processes and utilize any existing investments into software and equipment.

Neoss is continually expanding the options available for digital process steps such as scanning of implant positions, design of prosthetics and production alternatives centrally and locally.



## Prosthetic range

Neoss offers a simple and reliable solution of implant-supported abutments, bridges and bars, which in addition to the proven Neoss Implant System are compatible with implants of other manufacturers.

- Available in Titanium, Cobalt Chromium and Zirconia (Individual Abutment, VITA Classic Shades A1-D4)
- Angulated screw access solution with the iGO screw connection for all material options
- All individual abutments for Neoss implants are produced from pre-made blanks for highest accuracy
- Abutment screws with the Crystalloc™ surface facilitate high clamping force for long-term clinical function
- Suitable for veneering with composite or porcelain
- Fixed-removable restorations with attachments are possible (PRECI-VERTIX®, PRECI-HORIX® and Equator)
- Libraries for all major design software with integrated soft tissue profiles matching Neoss Esthetiline shapes



Neoss utilize central milling facilities located in Sweden – Arc – a Neoss group company – and also offer solutions for local and in-house milling by providing products such as blanks for metal abutments and NeoLinks for ceramic abutments.

Platform	Individual Abutment			Bridge		Bar		Scan Bodies	Model Analogs
	Ti	CoCr	ZrO	Ti	CoCr	Ti	CoCr		
Ø3.5 – 6.0	✓	✓	✓	✓	✓	✓	✓	✓	✓
Ø3.25	✓	✓	✓	✓	✓	✓	✓	✓	✓
Access	–	–	–	✓	✓	✓	✓	✓	✓

## Central milling

---

Arc with 10+ years of experience in milling customized dental products for Neoss and all major implant systems, provides excellent service levels and delivers high-quality fabrications including angulated screw channels. Arc products are delivered in a timely manner with the option to choose express delivery.

## Prosthetic design options

---

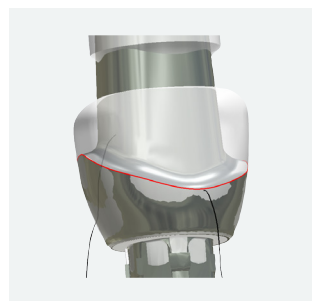
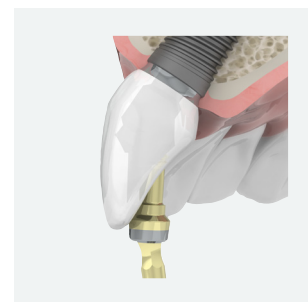
### Libraries

Neoss has developed design libraries for 3Shape, Exocad and Dental Wings software to enable you to create your digital prosthetic design for Neoss. A range of different Scan bodies for intra-oral scanning together with Model Analogs for use with printed or milled models from external sources are incorporated into libraries. Libraries together with the installation guidelines are available for download on [www.neoss-cadcam.de](http://www.neoss-cadcam.de).



### Angulated screw channel

The Neoss angulated screw access solution with the iGO screw provides the freedom to design screw channels with up to 25° angulation and 360° rotational freedom improving handling and esthetics of the restoration.



### Esthetiline

This soft tissue esthetic solution from Neoss with anatomical margins, is incorporated into Neoss data libraries to provide seamless design and anatomical fit from healing abutments to final restorations.

## Digital impressions

---

### Neoss Intra-Oral Scan Bodies

- Single and multiple teeth
- Intra-oral and desktop
- Scanners and design software - compatible with most available scanners and design software including 3Shape, Exocad, Dental Wings using Neoss libraries.



### Esthetic Healing Abutments with ScanPeg

- Single tooth
- Intra-oral
- Five different anatomical profiles
- Scanners and design software - compatible with most available scanners and design software including 3Shape, Exocad, Dental Wings using Neoss libraries.



## How it works

After customer account registration, the order is placed at the website – [www.neoss-cadcam.de](http://www.neoss-cadcam.de) or [www.arcsolutions.se](http://www.arcsolutions.se) (Nordic countries only), with either the digital files attached or the physical model sent by courier to the relevant Neoss Scan centre.

Neoss offer a quick and reliable scan and design service for those laboratories without a recommended scanner. This service is not available on all markets, please contact your Neoss Representative for more information.

### Scan (and design) centres per market:

#### Nordic and other countries (scan)

##### Arc Solutions AB

Box 13011  
SE-250 13 Helsingborg  
Sweden  
T +46 42 3017440

#### Australia and New Zealand (scan)

##### Neoss Scan Centre

Neoss Australia Pty. Ltd  
PO Box 404 New Farm  
QLD 4005  
Australia  
T +61 7 3216 0165  
F +61 7 3216 0135

#### Germany, Austria and UK (scan and design)

##### Neoss Scan & Design Centre

Neoss GmbH  
Im MediaPark 8  
DE-50670 Köln  
Germany  
T +49 221 55405-319  
F +49 221 55405-522

## Contact details

#### Australia

Neoss Australia Pty. Ltd  
PO Box 404  
New Farm  
QLD 4005  
T +61 7 3216 0165  
F +61 7 3216 0135  
E [info.au@neoss.com](mailto:info.au@neoss.com)

#### Austria

Neoss GmbH  
T +49 221 55405-322  
F +49 221 55405-522  
E [info@neoss.de](mailto:info@neoss.de)

#### China

Shanghai Legend Life  
Technology Co., Ltd  
4th floor, Block 6  
1525 Minqiang Road  
Songjiang District  
Shanghai 201612  
P. R. China  
T +86-21-6765 7130-617  
F +86-21-6765 7131  
E [info@legendlifetech.com](mailto:info@legendlifetech.com)

#### Croatia

Medical Intertrade d.o.o  
10431 Sveta Nedelja  
HRVATSKA  
T +385 1 33 74 020  
F +385 1 33 36 035  
E [dental@medical-intertrade.hr](mailto:dental@medical-intertrade.hr)

#### Denmark

Neoss AB  
T +46 (0)31 88 12 80  
E [info@neoss.se](mailto:info@neoss.se)

#### Germany

Neoss GmbH  
Im MediaPark 8  
DE-50670 Köln  
T +49 221 55405-322  
F +49 221 55405-522  
E [info@neoss.de](mailto:info@neoss.de)

#### Italy

Neoss Italia S.r.l.  
Viale Certosa 138  
IT-20156 Milano  
T +39 02 92952 1 (centralino)  
F +39 02 92952 250  
E [italia@neoss.info](mailto:italia@neoss.info)

#### Japan

Neoss Japan Co.  
Y101 Building 5F  
No. 1-4 Kanda-Sudacho Chiyodaku  
Tokyo 101-0041  
T +81 3 5289 3511  
F +81 3 5289 3512  
E [info@neoss.co.jp](mailto:info@neoss.co.jp)

#### Middle East & Africa

Neoss Limited  
Unit 3737 Level 1  
Jewelry & Gemplex 3  
P.O. Box 5003315  
Dubai  
United Arab Emirates  
E [info.me@neoss.com](mailto:info.me@neoss.com)

#### Netherlands

Rotor, Medical Supplies  
Economiestraat 16  
NL-6135 KV Sittard  
T +31-46-481 12 03  
F +31-46-481 12 04  
E [mail@rotor-medical.com](mailto:mail@rotor-medical.com)

#### New Zealand

Neoss Australia Pty. Ltd  
T +61 7 3216 0165  
F +61 7 3216 0135  
E [info.au@neoss.com](mailto:info.au@neoss.com)

#### Norway

Neoss AB  
T +46 (0)31 88 12 80  
E [info@neoss.se](mailto:info@neoss.se)

#### Republic of Ireland

Neoss Ltd  
T +44 1423 817-733  
F +44 1423 817-744  
E [info@neoss.com](mailto:info@neoss.com)

#### Spain

Formación, Gestión Y  
Rendimiento, S.L  
C. Londres 54 E2B  
ES-08036 Barcelona  
T +34 931 408 770  
E [info@fgrdental.com](mailto:info@fgrdental.com)

#### Sweden

Neoss AB  
Arvid Wallgrens backe 20  
SE-413 46 Göteborg  
T +46 (0)31 88 12 80  
E [info@neoss.se](mailto:info@neoss.se)

Arc Solutions AB  
Box 13011  
SE-250 13 Helsingborg  
T +46 (0)42 3017440  
E [info@arcsolutions.se](mailto:info@arcsolutions.se)

#### Switzerland

Flexident AG  
Amlehnstr. 22  
CH-6010 Kriens  
T +41413104020  
F +41413104025  
E [info@flexident.ch](mailto:info@flexident.ch)

#### Thailand

S.D.Tantavade Co., Ltd.  
47 Samakkee 20, Samakkee Road  
Thasai Muang  
Nonthanburi 11000  
T +66 2 952 4815 18  
F +66 2 952 4819  
E [info@sdt1988.com](mailto:info@sdt1988.com)

#### Turkey

Neoss Sağlık Hizmetleri  
Anonim Şirketi  
Küçükbakkalköy mh. Kocasinan cad. No:4  
1 Atasehir  
34750 İstanbul  
T +9 0216 504 3 444  
E [info@neosshsi.com](mailto:info@neosshsi.com)

#### United Kingdom

Neoss Ltd  
Windsor House  
Cornwall Road  
Harrogate  
HG1 2PW  
T +44 1423 817-733  
F +44 1423 817-744  
E [info@neoss.com](mailto:info@neoss.com)

#### United States

Neoss Inc.  
21860 Burbank Blvd.,  
Ste. 190 (North Entrance)  
Woodland Hills, CA 91367  
T +1 866 626-3677  
F +1 818 432-2640  
E [contact.usa@neoss.com](mailto:contact.usa@neoss.com)